

# MONTHLY MEMBERSHIP PROGRESS REPORT

LOCATION INDIA

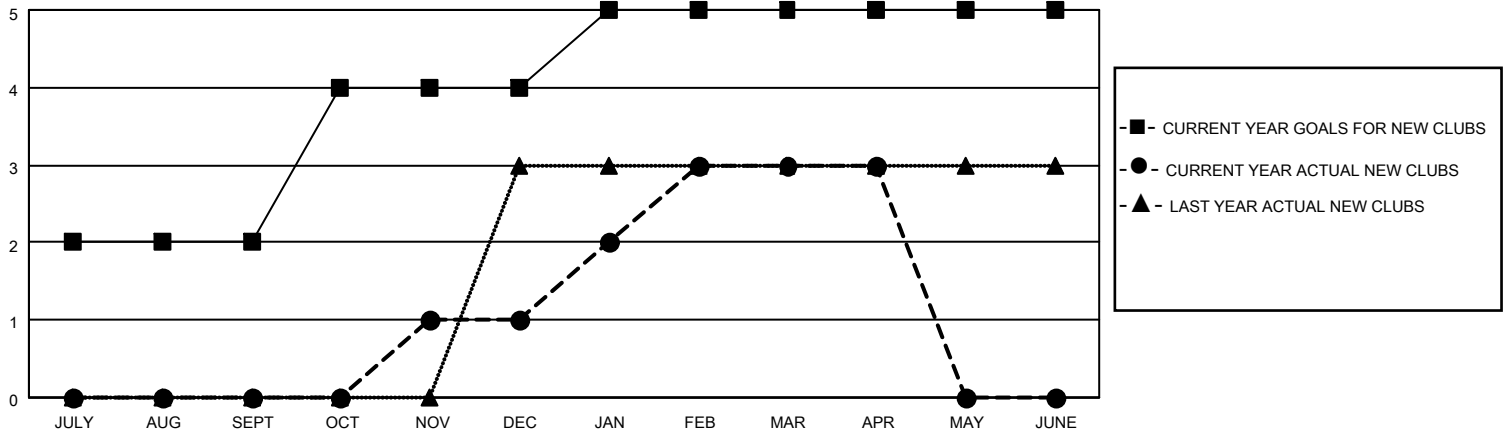
District 322C5

Results as of: 4/30/2022

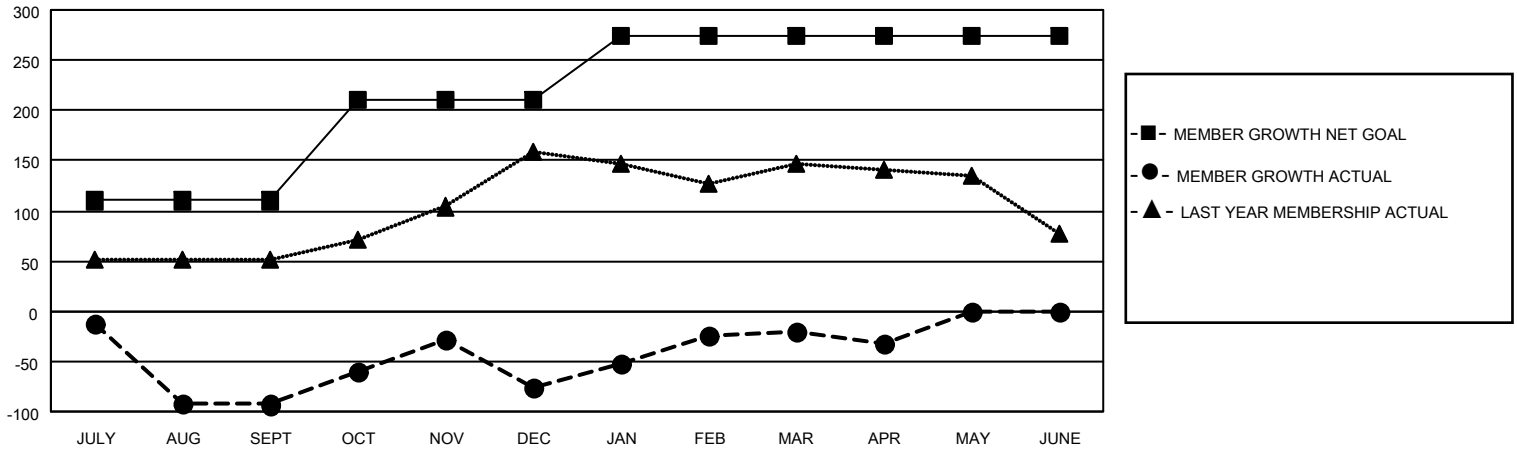
Clubs			
RESULTS FOR 2021-2022			
QUARTER	NEW CLUB GOAL	NEW CLUBS	DROPPED CLUBS
JULY/AUG/SEPT	2	0	5
OCT/NOV/DEC	2	1	2
JAN/FEB/MAR	1	2	0
APR/MAY/JUNE	0	0	0

Members			
RESULTS FOR 2021-2022			
QUARTER	MEMBER GROWTH NET GOAL	MEMBER GROWTH ACTUAL	DROPPED MEMBERS ACTUAL (including transfers)
JULY/AUG/SEPT	110	8	96
OCT/NOV/DEC	100	83	64
JAN/FEB/MAR	65	57	2
APR/MAY/JUNE	0	7	17

**GOALS AND ACTUAL NEW CLUBS CUMULATIVE**



**GOALS AND ACTUAL MEMBERS CUMULATIVE**



**DROPPED CLUBS: 7**

**24 CLUBS OF 53 ADDED 1 OR MORE NEW MEMBERS**

**GENDER DISTRIBUTION**

**DROPPED MEMBERS**

DECEASED	3
CLUB CANCELLED	93
OTHER	83
<b>TOTAL</b>	<b>179</b>

[CLICK HERE FOR CUMULATIVE MEMBERSHIP DATA](#)

MALE	861 (58.14%)
FEMALE	620 (41.86%)
NON BINARY	0 (0.00%)
PREFER NOT TO ANSWER	0 (0.00%)

TOTAL FAMILY UNIT MEMBERS 1,244

FAMILY MEMBERS PAYING HALF DUES 891